

## WHY USE MAXIMIZER DT PRO™ WHEN THERE ARE ALREADY BACTERIA IN MY TANK?

Although some bacteria are present in the waste these organisms do not work well on protein, fiber and grease. Furthermore, modern chemistry has provided us with advanced cleaning products made of complex molecules. Ordinary bacteria just can't break these chemicals down. Maximizer DT Pro™ is specially formulated to bio-degrade most types of organic waste. Maximizer DT Pro™ contains a unique combination of ingredients not found in other septic tank products. In fact, Maximizer DT Pro™ can even restore failing septic fields in most cases.

Using Maximizer DT Pro™ and following the 3 steps listed below will result in decades of trouble-free service from your system:

### 1. Have baffles checked every 2 or 3 years.

*If the outlet baffle deteriorates, undigested waste escapes from the tank, plugging the pores in your drainfield.*

### 2. Stop killing your tank's biological action.

*Your system relies on bacteria to function properly. Discontinue use of (or use sparingly) anything labeled Anti-bacterial, Anti Septic, Disinfectant, Sanitizer, or Kills Germs. Switch to non-chlorine bleaches, cleaners and automatic dishwashing detergents.*

### 3. Have your tank pumped regularly.

*Undigested mineral matter builds up on the bottom of your tank over the years. If the level gets too high it can flow out into your drain field. Pumping every 3 to 5 years avoids any problems. (Check with your state about regulations regarding the frequency of pumping.)*

## GO GREEN WITH MAXIMIZER DT PRO™!

### One Product does it all!

- Eliminates costly backups
- Reduces build up in tank and pipes
- Eliminates foul drain odors
- Restores clogged drainfields
- Eliminates garbage disposal odors
- No harmful chemicals
- Easy to use, no premixing
- Minimizes health and safety risks
- Environmentally friendly and safe



## GREASE TRAPS

Cleaning out a grease trap is a disgusting job! It's hard on equipment, time consuming and messy! No one wants to do it!

If a grease trap backs up, it creates unsanitary and unpleasant conditions for both employees and customers! The odor can be so over-whelming a business may be forced to shut down! And that can be very costly!

The easiest way to avoid all these headaches is to use Maximizer DT Pro™! This industrial strength product contains millions of microorganisms that will degrade the (F.O.G.) fats, oil and grease in commercial kitchens and restaurant grease traps. It's non-hazardous, non-flammable and non-corrosive. Regular application prevents foul smelling back-ups and system failures!

### This high performance liquid:

- Keeps drain lines clean
- Controls noxious odors
- Greatly reduces drain backups
- Reduces costly business downtime
- Reduces operational costs
- Improves regulatory compliance
- Poses no danger to restaurant staff

Maximizer DT Pro™ is formulated to be used with an auto-dispensing system. Ask your dealer for more information on our auto injection unit.

Maximizer DT Pro™ is the environmentally responsible solution for treating organic waste buildup in drain lines, grease traps and onsite treatment systems.



### DEALER:

Level 7 Chemical, Inc.  
253 Sturgis Rd  
Conway, AR 72034  
1-855-927-1777

[www.level7chemical.com](http://www.level7chemical.com)

MAXIMIZER DT PRO™ IS A PRODUCT OF  
STATEWIDE SUPPLY, INC. / DANE, WI



## ENVIRONMENTALLY SAFE TREATMENT FOR DRAINS, SEPTICS & GREASE TRAPS

### MAXIMIZER DT PRO™ WORKS IN ALL THESE AREAS:

- Kitchen Sinks
- Garbage Disposals
- Floor Drains
- Lavatories
- Showers
- Tubs
- Laundry Drains
- Septic Tanks & Fields
- Grease Traps
- Cesspools
- Motor Homes
- Outhouses

## WHAT IS MAXIMIZER DT PRO™?

Maximizer DT Pro™ is an environmentally friendly drain cleaner used to remove organic material from drains, septic tanks and grease traps. This custom formulated blend of naturally occurring bacteria and enzymes surpasses any liquid product on the market today.

- It biodegrades organic buildup
- It is safe and economical
- It contains no soap or chemicals.
- It is not caustic or acidic.
- Designed for residential, commercial and industrial application

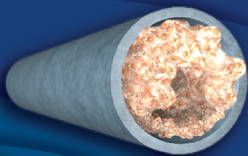


Maximizer DT Pro™ is formulated with the safest ingredients available in order to protect the environment and our families.

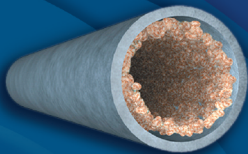
## HOW DOES MAXIMIZER DT PRO™ WORK?

Maximizer DT Pro™ is an industrial strength liquid that requires no premixing. Its unique blend of “fast acting” Class 1 organisms bio-degrade waste onsite! Stabilizers in the product prevent it from becoming active until it is put into the waste stream. Once entered into the stream, bacteria and enzymes breakdown the waste and convert it into carbon dioxide, water and mineral ash.

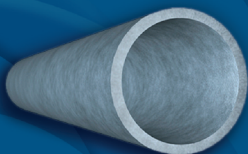
It dramatically reduces waste buildup in grease traps, lift stations, drain lines, and septic systems. It's safe for all types of plumbing and the environment!



*Waste accumulates in your pipes causing slow or even clogged drains.*



*Within days the friendly bacteria in Maximizer DT Pro™ begin to eat through the waste restoring drain flow to full capacity.*



*Regular treatments with Maximizer DT Pro™ will keep your drains clean and trouble free!*

## COMPARE TO MECHANICAL EQUIPMENT!

In most cases cabling drains is just a temporary solution to the problem. Cables poke a hole in the organic waste which leaves a base for new waste to adhere to. Maximizer DT Pro™ will eat all the waste in the pipe leaving nothing for the new waste to cling to. Without using Maximizer DT Pro™ you'll constantly be fighting drain problems.

## COMPARE TO CHEMICALS

Why would anyone pour harsh caustic chemicals down the drain? They are dangerous for the user and the environment. They also ruin plumbing drain lines and septic systems.

These acids don't clear the line; they just burn a hole in the organic build-up. As they continue down the pipe they become more diluted and weaker. Because they are restricted by gravity they only open a small hole in the waste at the bottom of the pipe. New waste quickly fills this opening causing another stoppage.

The bacteria in Maximizer DT Pro™ are not restricted by gravity. They will clean the entire length of the pipe, top, bottom and sides. Monthly maintenance treatments with Maximizer DT Pro™ will keep your plumbing system clean and free flowing. Maximizer DT Pro™ is Effective, Safe and Non-polluting!



## MAXIMIZER DT PRO™ FOR SEPTIC SYSTEMS

Most septic systems in operation today are not functioning well. Chemicals, bleaches, detergents, food preservatives, anti-bacterial soaps, and bowl cleaners inhibit or kill bacterial action within the system. This lets solids accumulate in the tank, some of which flow out and clog the drainfield. Replacing a failed septic system can cost a homeowner thousands of dollars!

Maximizer DT Pro™ can save you money and protect your investment! The bacteria and enzymes in this amazing product have been specially formulated to biodegrade the fats, oils, grease, and synthetic organics clogging your septic system. With regular maintenance treatment, Maximizer DT Pro™ will keep your septic system operating trouble free for years.

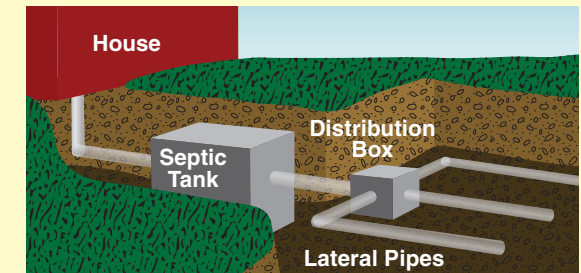
Preventing back-ups and overflows also protects surface and ground water from nutrients, pathogens and other contaminants.

Use Maximizer DT Pro™ to keep these harmful materials from entering into our recreational lakes, streams and ponds.



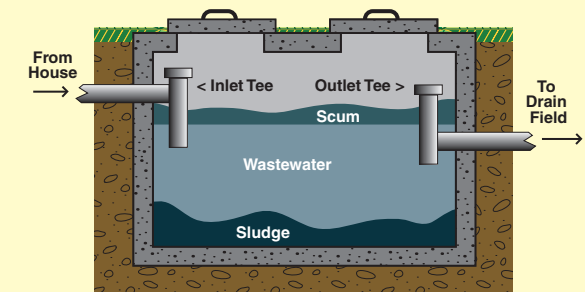
## HOW YOUR SEPTIC SYSTEM WORKS.

There are a wide variety of system designs. Your system may not be exactly like these drawings. However, the basic principles of operation apply to all systems.



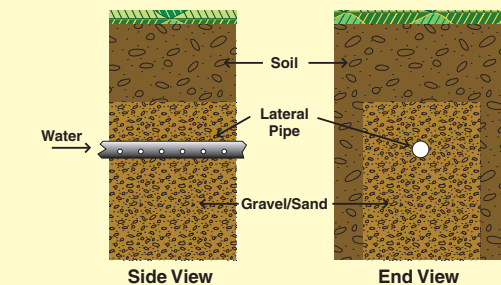
*Septic tanks are designed to allow bacteria and enzymes to biodegrade organic waste. This amazing process actually converts waste into water, carbon dioxide and small amounts of mineral matter!*

### SEPTIC TANK



*Incoming solid matter sinks. Soap and grease float. The tank has an outlet baffle to hold in undigested waste. Only clean water should leave the tank and enter the lateral pipes.*

### DRAINFIELD/LEACH BED



*Water flows out of the laterals into a bed of gravel or sand which acts as a final filter before the water enters the ground.*