



CAFFEINE ANHYDROUS
SAFETY DATA SHEET

Supplier:
Level 7 Chemical
255 Sturgis Rd, Conway, AR 72034
(855) 927-1777

Section 1 Identification

Product name: CAFFEINE

Company information:

Name: CSPC INNOVATION PHARMACEUTICAL CO., LTD.

Address: No. 36 Fuqiang Western Road, Luancheng County ,Shijiazhuang City, Hebei Province, China

Zip Code: 051430

Telephone : +86 311 85408700

Fax : +86 311 85409463

Emergency Phone: +86 311 85408723

Recommended use: active pharmaceutical ingredient , food additive

Section2 Hazards Identification

Classification of the substance or mixture

GHS Classification in accordance with 29 CFR 1910 (OSHA HCS)

Acute toxicity, Oral (Category 4), H302

GHS Label elements, including precautionary statement

Hazard pictograms:



GHS07

Signal word: Warning

Hazard statements:

H302 Harmful if swallowed

Precautionary statements:

P264 Wash hands thoroughly after handling.

P270 Do not eat, drink or smoke when using this product.

P301+P312 IF SWALLOWED: Call a POIZON CENTER or doctor/physician if you feel unwell.



石药集团新诺威制药股份有限公司
CSPC INNOVATION PHARMACEUTICAL CO., LTD.

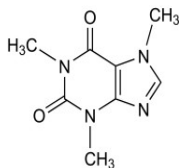
P330 Rinse mouth
P501 Dispose of contents/container

Hazards not otherwise classified (HNOC) or not covered by GHS-none

Section3 Composition/Information on Ingredients

Product name: CAFFEINE
Synonyms: CAFFEINE ; 3,7-Dihydro-1,3,7-trimethyl-1H-purine-2,6-dione
CAS No.: 58-08-2
EC No: 200-362-1
Index-No.: 613-086-00-5
Classification: Xn; R22
Chemical formula: C₈H₁₀N₄O₂
Molecular Weight: 194.2g/mol

Structure formula:



Section 4 First-aid Measures

Description of first aid measures

General advice

Consult a physician. Show this safety data sheet to the doctor in attendance. Move out of dangerous area.

If inhaled

If breathed in, move person into fresh air. If not breathing, give artificial respiration. Consult a physician.

In case of skin contact

Remove affected clothing and wash all exposed skin area with mild soap and plenty of water, followed by warm water rinse. Consult a physician.

In case of eye contact

Rinse immediately with plenty of water. Obtain medical attention if pain, blinking, tears or redness persists.



If swallowed

Never give anything by mouth to an unconscious person. Rinse mouth with water. Consult a physician.

Most important symptoms and effects, both acute and delays

The most important known symptoms and effects are described in the labeling and/or in section 11.

Indication of any immediate medical attention and special treatment needed

No data available.

In case of reactions described in hazards identification or other severe, immediate or persisting symptoms seek medical advice and call the nearest poison centre. Show the label and this safety data sheet.

Section 5 Fire-fighting Measures

Suitable extinguishing media

Water spray, alcohol-resistant foam, Carbon dioxide, Dry powder

Surrounding fires

Use water spray or fog for cooling exposed containers.

Protection against fire

Do not enter fire area without proper protective equipment, including respiratory protection.

Special hazards arising from the substance or mixture

No data available.

Section 6 Accidental Release Measures

General precautions

Remove ignition sources. Evacuate area.

Personal precautions

Use personal protective equipment. Spill should be handled by trained cleaning personnel properly equipped with respiratory and eye protection.

Clean up methods

Clean spills promptly. To clean the floor and all objects contaminated by this material, use: sodium hypochlorite solution. Ensure adequate ventilation.



Section 7 Handling and Storage

Precautions for safe handling:

Handle in accordance with good industrial hygiene and safety practice. Wash hands before breaks and at the end of workday. Avoid contact with skin and eyes. Avoid formation of dust and aerosols. Provide appropriate exhaust ventilation at places where dust is formed.

Storage:

Keep container tightly closed in a natural temperature, well ventilated place.

Storage - away from:

All heat sources, including direct sunlight. Open flame. Sources of ignition. Sparks. Incompatible materials, see §10.

Control of environmental exposure

Do not let product enter drains.

Section 8 Exposure Controls/Personal Protection

Engineering measures:

Use process enclosures, local exhaust ventilation, or other engineering controls to keep airborne levels below recommended exposure limits.

Personal protection:

- Respiratory protection: Wear approved mask. In case of insufficient ventilation, wear suitable respiratory equipment.
- Hand protection: Wear suitable gloves resistant to chemical penetration.
- Skin protection: Wear suitable protective clothing.
- Eye protection: Chemical goggles or safety glasses.

Control of environmental exposure

Do not let product enter drains.

Section 9 Physical and Chemical Properties

Information on basic physical and chemical properties

- a) Appearance: White or almost white



Powder (20 °C)

b) Odor:	odorless
c) Odor Threshold:	no data available
d) pH:	5.5-6.5 at 10g/L at 20°C
e) Melting point [°C]:	234-239
f) Initial boiling point and boiling range:	no data available
g) Flash point:	no data available
h) Evaporation rate:	no data available
i) Flammability(solid , gas)	no data available
j) Upper/lower flammability or explosive limits	no data available
k) Vapour pressure	no data available
l) Vapour density	no data available
m) Relative density	no data available
n) Solubility	Sparinly soluble in water, freely soluble in boiling water, slightly soluble in ethanol. It dissolves in concentrated solutions of alkali benzoates or salicylates.
o) Log P octanol / water at 20°C	-0.070
p) Auto-ignition temperature [°C]	540-600
q) Decomposition temperature	no data available
r) Viscosity	no data available
s) Explosive properties	no data available
t) Oxidizing properties	no data available

Section 10 Stability and Reactivity

Specific Concentration Limit(s):	no data available
Stability and reactivity:	Stable under normal conditions.
Materials to avoid:	Oxidizing agent.



Conditions to avoid:	Heat. Light.
Hazardous decomposition products:	Carbon monoxide. Carbon dioxide. Nitrogen oxides. When heated to decomposition, emits dangerous fumes.
Hazardous reactions:	None under normal conditions.
Hazardous polymerization:	Will not occur.

Section 11 Toxicological Information

Information on toxicological effects

Acute toxicity

Rat oral LD50 [mg/kg]:	469.9
Rabbit oral LD50 [mg/kg]:	No data available.
Mouse oral LD50 [mg/L/4h]:	No data available.

Skin corrosion/irritation

Skin –rabbit Result: No skin irritation (OECD Test Guideline 404)

Serious eye damage/eye irritation

Eyes –rabbit Result: No eye irritation (OECD Test Guideline 405)

Respiratory or skin sensitization

-mouse Result: Did not cause sensitization on laboratory animals.

Carcinogenicity

IARC:	3 -Group 3: Not classifiable as to its carcinogenicity to humans (Caffeine).
ACGIH:	No component of this product presents at levels greater than or equal to 0.1% is identified as a carcinogen or potential carcinogen by ACGIH.
NTP:	No component of this product presents at levels greater than or equal to 0.1% is identified as a known or anticipated carcinogen by NTP.
OSHA:	No component of this product presents at levels greater than or equal to 0.1% is identified as a carcinogen or potential carcinogen by OSHA.

Reproductive toxicity

No data available.

Specific target organ toxicity -single exposure



No data available.

Specific target organ toxicity -repeated exposure

No data available.

Aspiration hazard

No data available.

Additional Information

RTECS: EV6475000

Section 12 ECOLOGICAL INFORMATION

Ecological effects information: May be toxic to aquatic life.

LC50-96 Hour - fish [mg/L]: 87

EC50-48 Hour-Daphnia magna [mg/L]: 182

IC50-72h-Algae [mg/L]: >100

Biodegradation [%]: Biodegradable.

Persistence - degradability: No data available.

Log P octanol / water at 20°C: -0.070

Bioaccumulative potential: No data available.

Section 13 Disposal Considerations

Waste treatment methods

Product

Contact a licensed professional waste disposal service to dispose of this material. Dissolve or mix the material with a combustible solvent and burn in a chemical incinerator equipped with an afterburner and scrubber. Offer surplus and non-recyclable solutions to a licensed disposal company.

Contaminated packaging

Dispose of as unused product.

General: Dispose of this material and its container at special waste collection point. Dispose in a safe



manner in accordance with local/national regulations.

Section 14 Transport Information

DOT (US)

Not dangerous goods.

IMDG

Not dangerous goods.

IATA

Not dangerous goods.

Section 15 Regulatory Information

Symbol(s) :	Xn:	Harmful.
Risk Phrases:	R22:	Harmful if swallowed.
Safety Phrases:	S22:	Do not breath dust
	S36/37 :	Wear suitable protective clothing and gloves.
	S45:	In case of accident or if you feel unwell, seek medical advice immediately (show the label when possible).

Section 16 Other Information

Further information : Revision-See:*

MSDS Revision Date: 2015.03.27

*: This SDS was prepared and is to be used only for this product. If the product is used as a component in another product, this SDS information may not be applicable.